



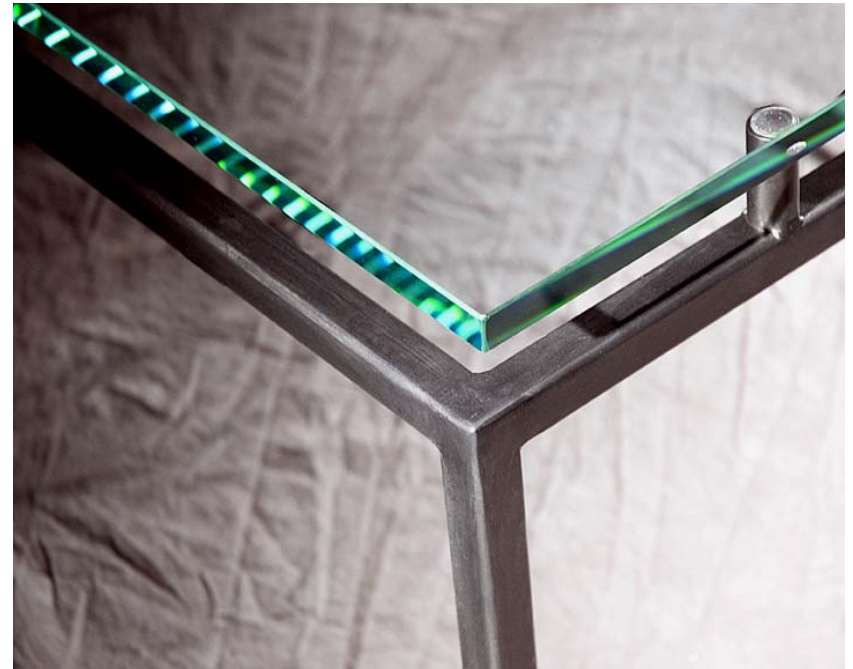
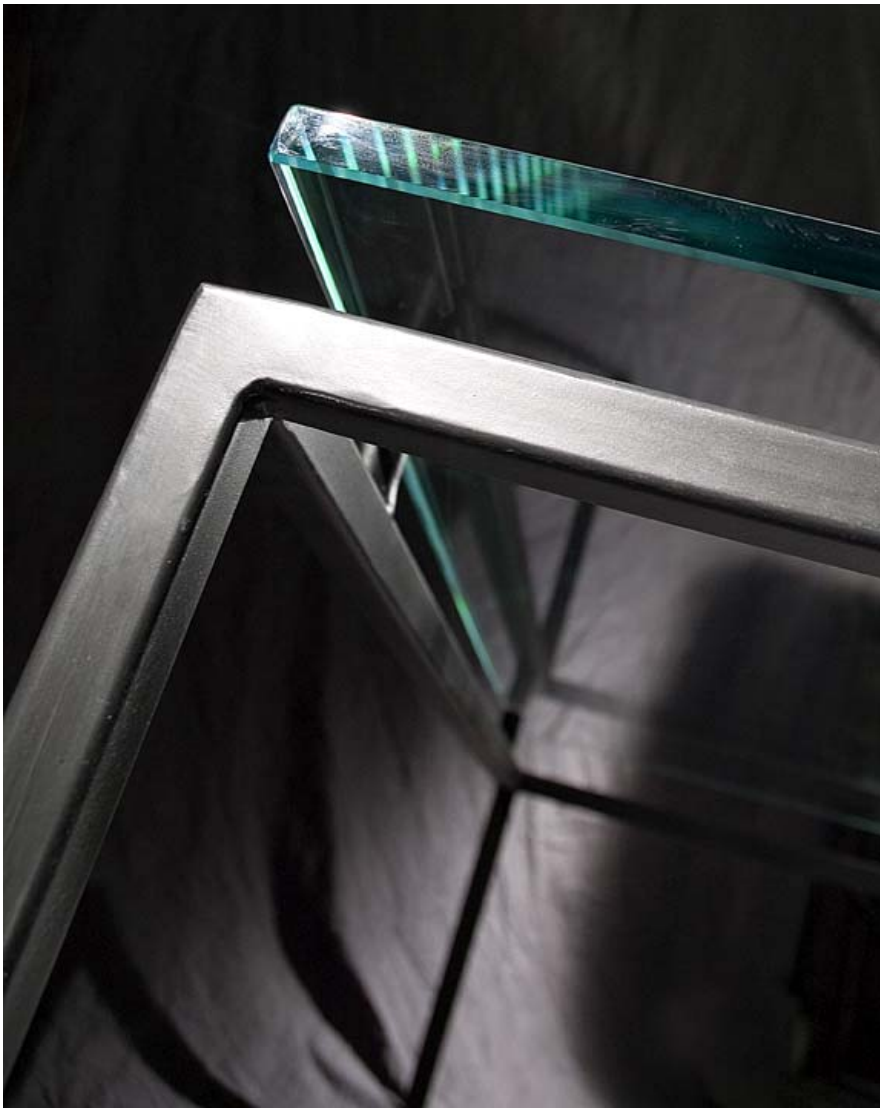
Sofa Table- 76" L x18" W x32" H- Two inches of polished and sealed beige colored concrete that inlays into a # 3 polished stainless steel base. Cocktail Table- 48W x 48L- Four inches of polished and sealed beige colored concrete on top of #3 polished stainless steel frame. Both were delivered to the Hall Winery in California.



Sofa Table- 76" L x18" W x32" H- Two inches of polished and sealed beige colored concrete that inlays into a # 3 polished stainless steel base. Cocktail Table- 48W x 48L- Four inches of polished and sealed beige colored concrete on top of #3 polished stainless steel frame. Both were delivered to the Hall Winery in California.



Cocktail Table-20'W x 46"L x 18"H- Custom cocktail table, steel frame, patina colored and clear sealed finish with raised star fire 3/4" thick glass .



Cocktail Table-20'W x 46"L x 18"H- Custom cocktail table, steel frame, patina colored and clear sealed finish with raised star fire 3/4" thick glass .



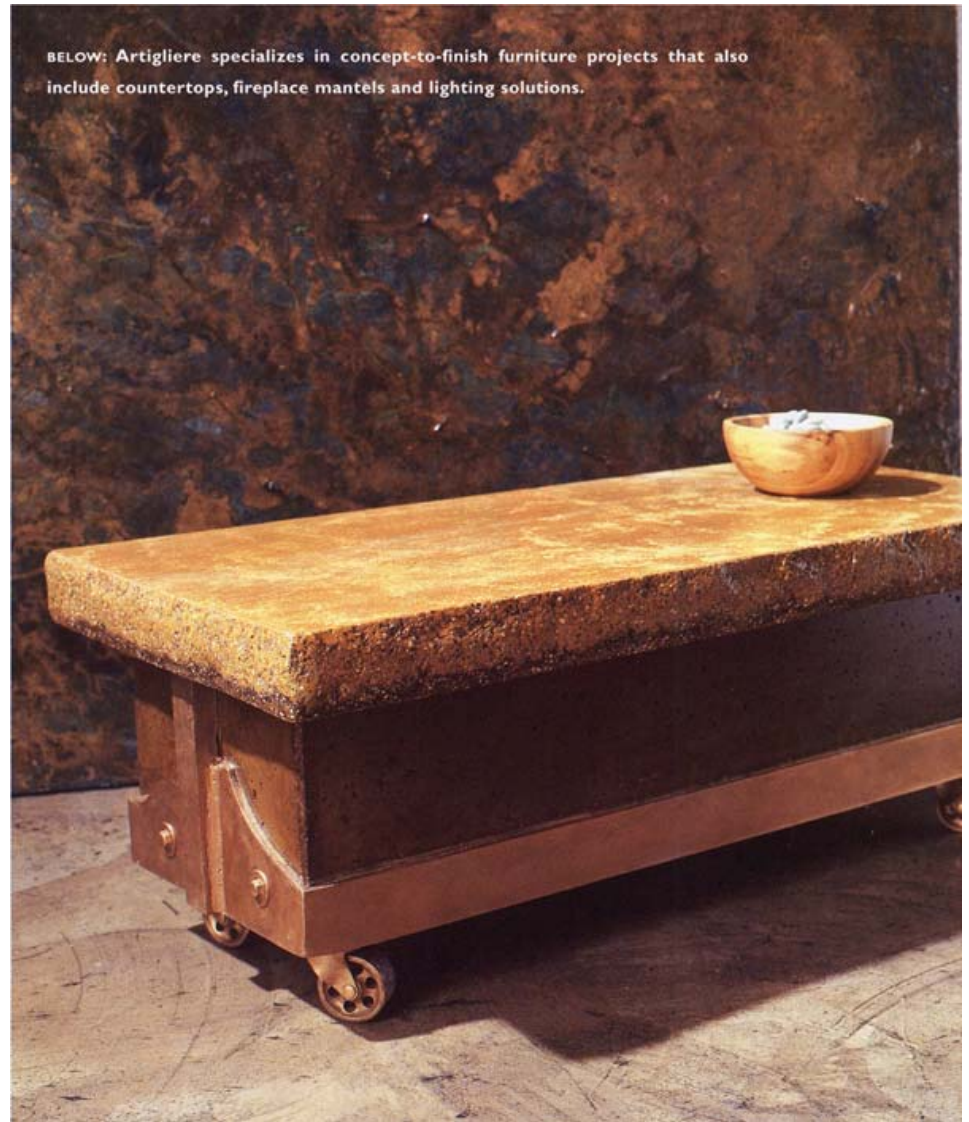
Beverage Bar-World Trade Center Dallas, Fanimation Showroom-144" W x 20"D x 2"thick- Custom colored burnt orange concrete tops with decorative steel inlays, high gloss epoxy finish, Bar front features resin panels and steel decorations .



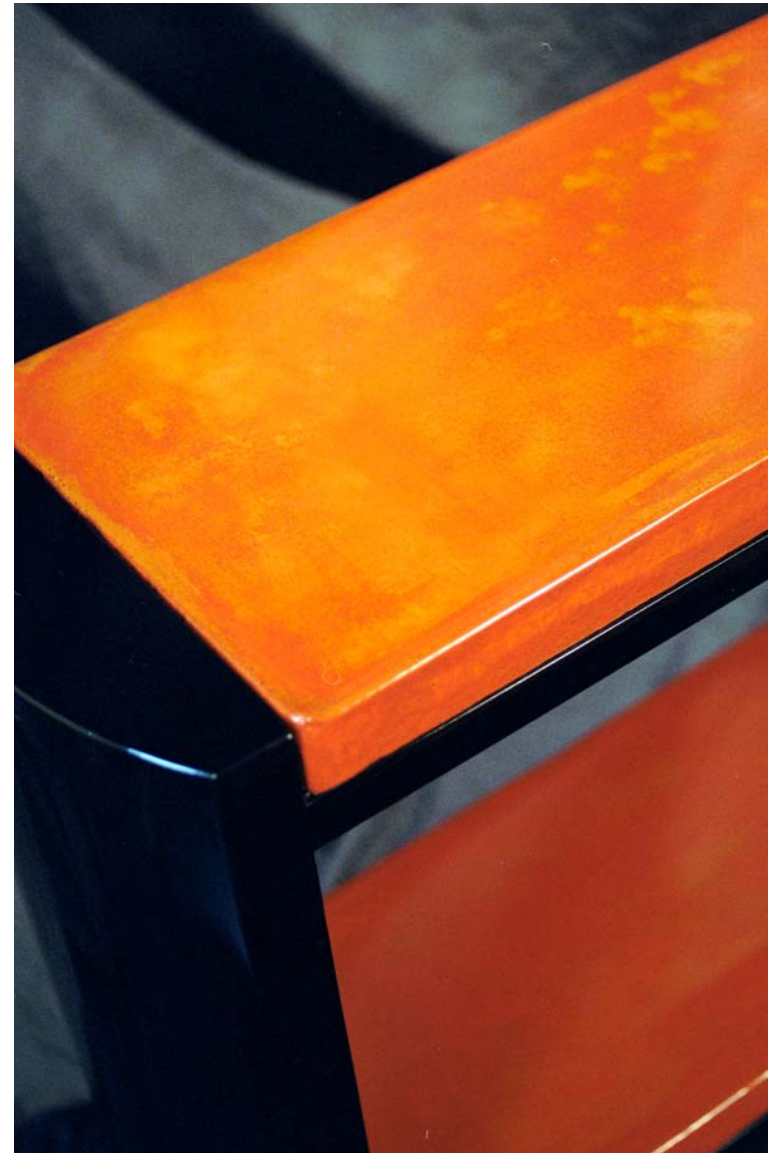
Beverage Bar(Below)-World Trade Center Dallas, Fanimation Showroom-10'W x 14"D x 4"thick- Custom teakwood top with decorative steel base, clear finish.



Beverage Bar-World Trade Center Dallas, Fanimation Showroom(Left)-144" W x 20" D x 2"thick- Custom colored concrete tops with decorative steel inlays, high gloss epoxy finish, Bar front features resin panels and steel decorations .



Mobile Asian Table 30"W x 12"D x 12"H Multi-colored concrete top has a mottled copper and rust brown stain semi-gloss finish, with concrete and metal base -copper and bronze tone on casters.



Console Table 44W x 12D x 32H, custom orange concrete tops, high gloss finish, with steel base powder coated gloss black



Concrete Countertops- 1-3/4 inch thick 5 color process using beige base, mottled rust brown, black and bronze with hand chiseled edging. Island features built in cutting board and knife block, hole for garbage disposal.



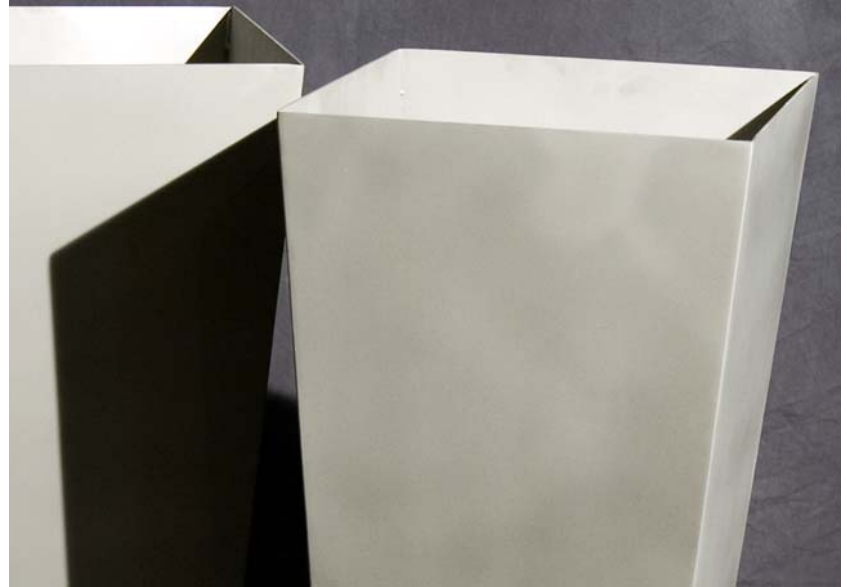
Concrete Countertops- 1-3/4 inch thick 5 color process using beige base, mottled rust brown, black and bronze with hand chiseled edging



Concrete Countertops- 1-3/4 inch thick 5 color process using beige base, mottled rust brown, black and bronze farm house limestone sink, curved corner hand chiseled edging



**Stainless Steel Mirror Wall Sculpture—218"W x 96"H – Designed as a free standing piece, mirror bright stainless steel panels, on a stainless and concrete base, reflecting everything that's in its path, polished #8 finish.**



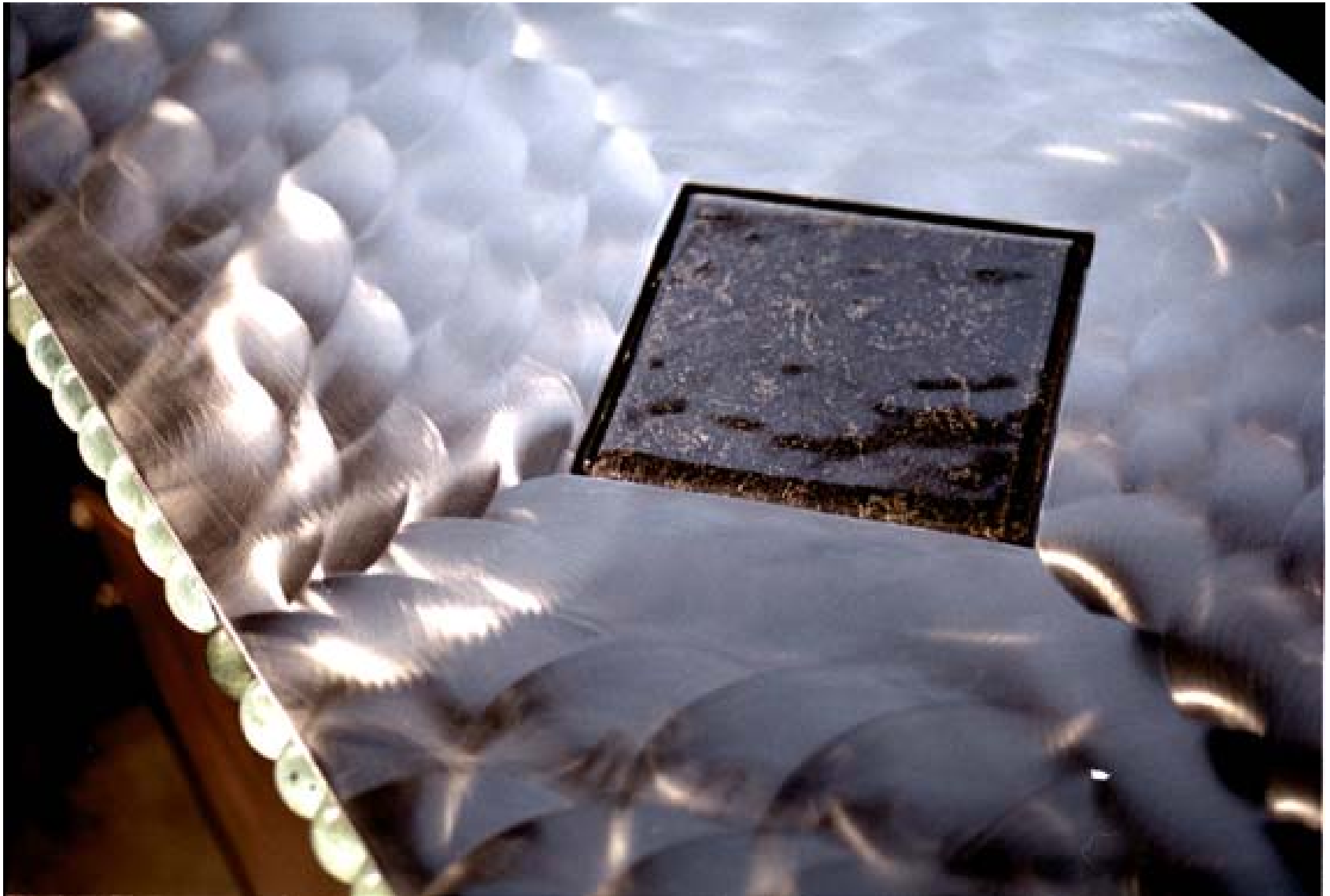
**Stainless Steel Planters- 42”H x 14”W (top) x 10” W (bottom)-stainless steel sandblasted with a matte clear finish.**



**Console Table-60"W x 12"D x 34"H, bronze/gold colored steel base, bronze concrete top**



Serving Table- 60W x 18D x 36H-Steel cabinet with steel top-inlayed glass tile and glass tile surround, painted and sealed finish, copper textured finish on doors.



Serving Table- 60W x 18D x 36H-Steel cabinet with steel top-inlayed glass tile and glass tile surround, painted and sealed finish, copper textured finish on doors.



Serving Table- 60W x 18D x 36H-Steel cabinet with steel top-inlayed glass tile and glass tile surround, painted and sealed finish, copper textured finish on doors.



Console Table- 90W x 20D x 28H-Mild Steel frame with smoked glass top, powder coated steel gray finish.



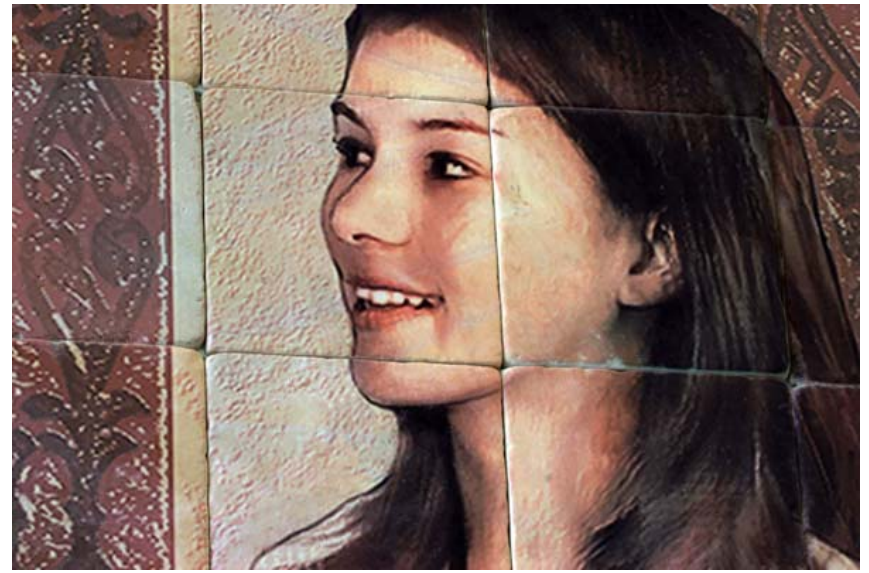
Console Table- 90W x 20D x 28H-Steel frame with smoked glass top, powder coated finish.



Console Table- 90W x 20D x 28H-Steel frame with smoked glass top, powder coated finish.



Breakfast Table- 72W x 34D x 36H-Steel tube base clear over chrome powder coated finish with a honed Navona limestone top, sealed finish

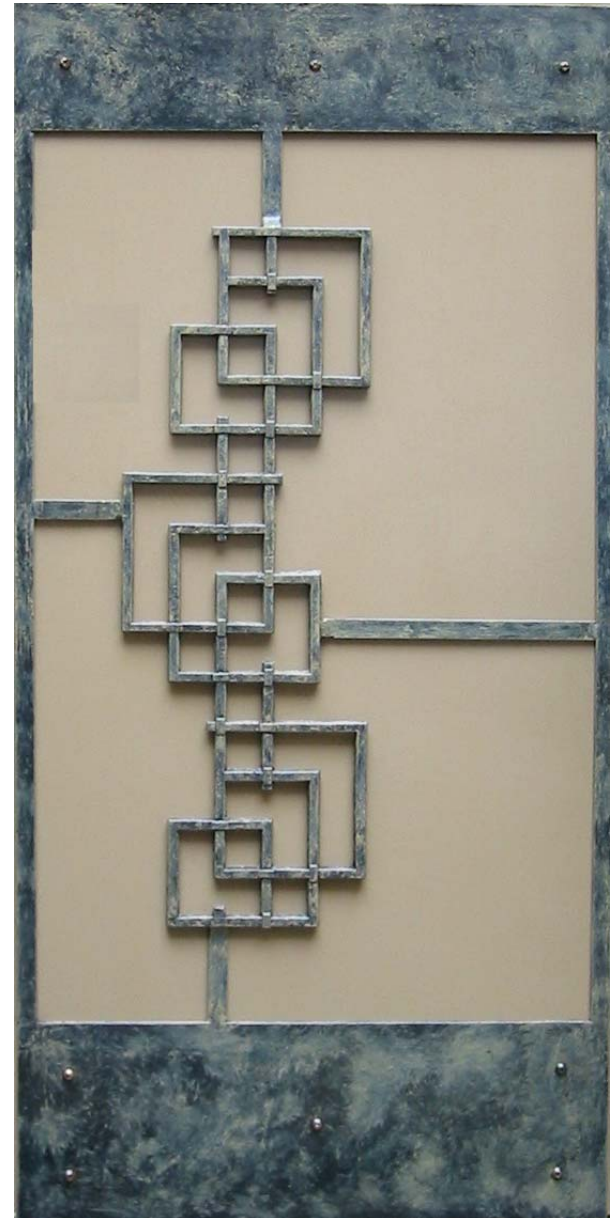
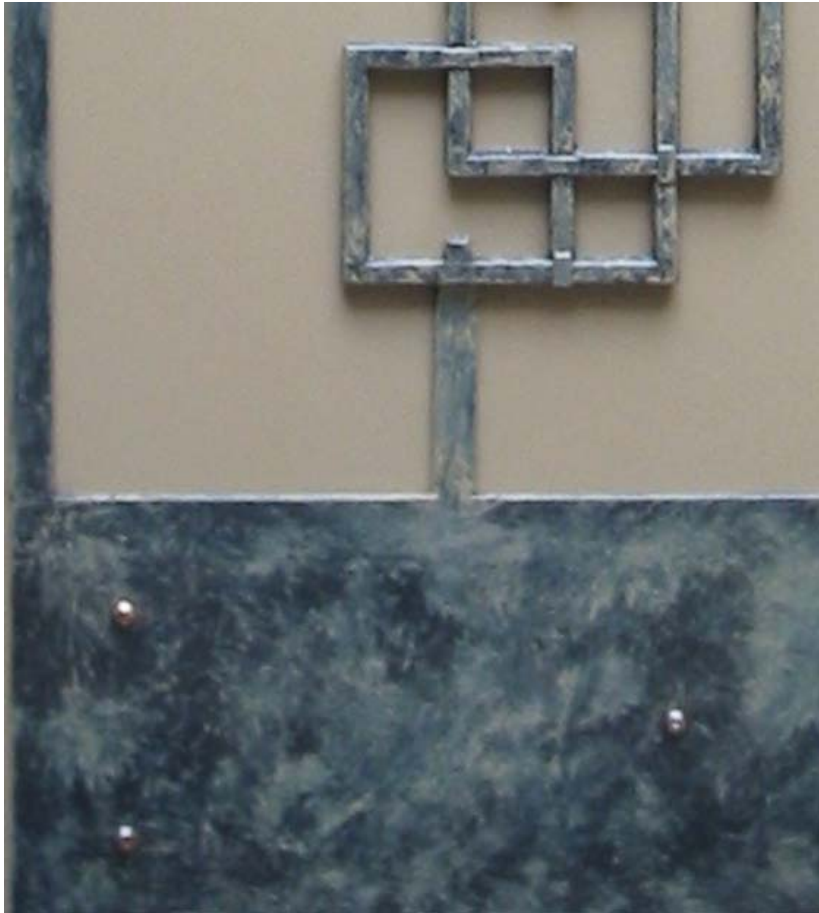


Tile Wall Mural-St. Pius Church, Dallas Texas- 288W x 120H-version of Leonardo Da Vinci's "The Last Supper". Artistic graphic rendering features 12 children from the church school sharing communion with Jesus. Image transfer on tumbled stone tile for the aged old world look. Featuring some smaller sections, notice the color and detail.



Tile Wall Mural-St. Pius Church, Dallas Texas- 288W x 120H-uniquely stylized version of Leonardo Da Vinci's "The Last Supper". Artistic graphic rendering features 12 children from the church school sharing communion with Jesus. Image transfer on tumbled stone tile for the aged old world look.

Powder Room Door-24W x  
38H mild steel frame overlay  
with decorative design,  
mottled gold paint with clear  
gloss finish





Powder Room-Concrete vanity, wall mounted with custom steel mounting brackets (installed) 60"W x 24"D x 27"H. Top is 2-1/4" thick, high gloss black finish. Mounting brackets include clear coated mild steel, mill finish.



The Lakewood Theater Lobby Bar-Dallas Texas, Built in 1938-Custom Concrete Countertop, 37' of curves, textured and colored with beige and mission tan. Featured are two tile inlays with photos of the theater from the fifties



Texas Star-60" circle, scored and acid stained golden wheat and umber sealed clear semi-gloss finish



Copper Sink- 120" W x 18" D x 8" H- Formed and designed for the 121 Community Church in Grapevine, Texas from a single sheet of 16 gauge copper.



Dog Bone Benches-Bark Park Central 48W x 20D x 18H, concrete shaped top with beige color, matte sealed, metal legs, industrial coated black



Concrete Tile for kitchens, bathrooms, accent pieces, custom colors, sizes and textures available.